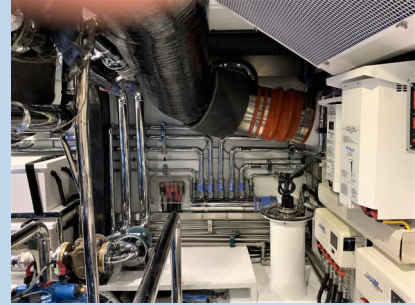




Marlow Voyager 100V



"We built the 100 Voyager for the yachtsman that wants to travel the globe without giving up the ability to make short hops at 18-20 knots."

-David Marlow

A typical ocean going vessel in this class cruises efficiently at about 8.5 knots or approximately 200 miles in 24 hours. ICE runs efficiently at 9.5 and given her great fuel efficiency she runs happily at 18 knots. Let's go 9.5 knots for 18 hours and 18 knots for 6 hours. That is 280 miles in the same 24 hours. On a 1500 mile crossing a traditional boat will take Seven and a half days and Ice does it in a little over Five. Long distance cruising speeds 25-30% higher than typical. High cruise speeds over double common long distance vessels.

Marlow 100

LOA 100'1.5" Waterline 95' Beam 22'6" Draft 5' 6"

Fuel 5500GAL USG USEABLE

Water 600GAL Waster 235GAL

200GAL Black Water

120GAL Lube Oil Tank

120GAL Used Oil Tank

Performance

Range at 9 knots 3500 Miles

Sprint at 18-20 knots for
48+ Hours

- 5 Staterooms, 4-5 heads & 2-3 person crew cabin. Private Capt's Cabin and large head shower at yacht Command Center.
- Command Bridge with Sky-bridge above
- Cruise at up to 18 knots with Heavy and Continuous Duty Baudouin V-12 Engines. Up to 25 knots high cruise with maximum power available.
- Transatlantic Range at 10 knots
- Highly Customizable Interiors
- Separate Pump Room for Generators & A/C

Marlow Marine Sales Inc.
4204 13th Street Court West
Palmetto, FL 34221

Phone: 941-729-3370
Fax: 941-729-4955
E-mail: Sales @MarlowMarine.com





Marlow Voyager 100V

Standard Equipment and Available Options

Standard Equipment of Note:

- Fully infused hull and superstructure
- Wave Piercing Bow for increased stability
- Fully finished bilges and engine room
- Velocijet Strut Keels for propeller protection and superior sea keeping
- Fully integrated inverter system to power all refrigeration and outlets on the yacht
- Sea Chest eliminates strainers and a dozen thru hull fittings
- Grohe faucets, Schwepper door hardware
- All composite tanks



Custom Interiors

Your choice of general arrangement, woods, and finishes



Available Optional Equipment of Note:

- Yacht built for you, built to order
- Optional power to 4,800 HP engines
- Electronics package specified by customer
- Joysticks and wireless remotes available
- World wide electrical power available
- Choice of Awlgrip Hull paint color including Flag Blue
- Enclosed Bridge and Crew cabin are available
- Factory installed water maker
- Choice of thrusters, stabilizers, and other systems
- Custom cockpit seating, tables, and cabinetry available
- Large crew cabin with private entrance
- Choice of Davit, twin davits available
- All soft goods specified by customer, bed spreads, pillows, window treatments, and headboards.
- Custom boarding doors, hand holds, and other safety

Marlow Marine Sales Inc.
4204 13th Street Court West
Palmetto, FL 34221

Phone: 941-729-3370
Fax: 941-729-4955
E-mail: Sales @MarlowMarine.com