

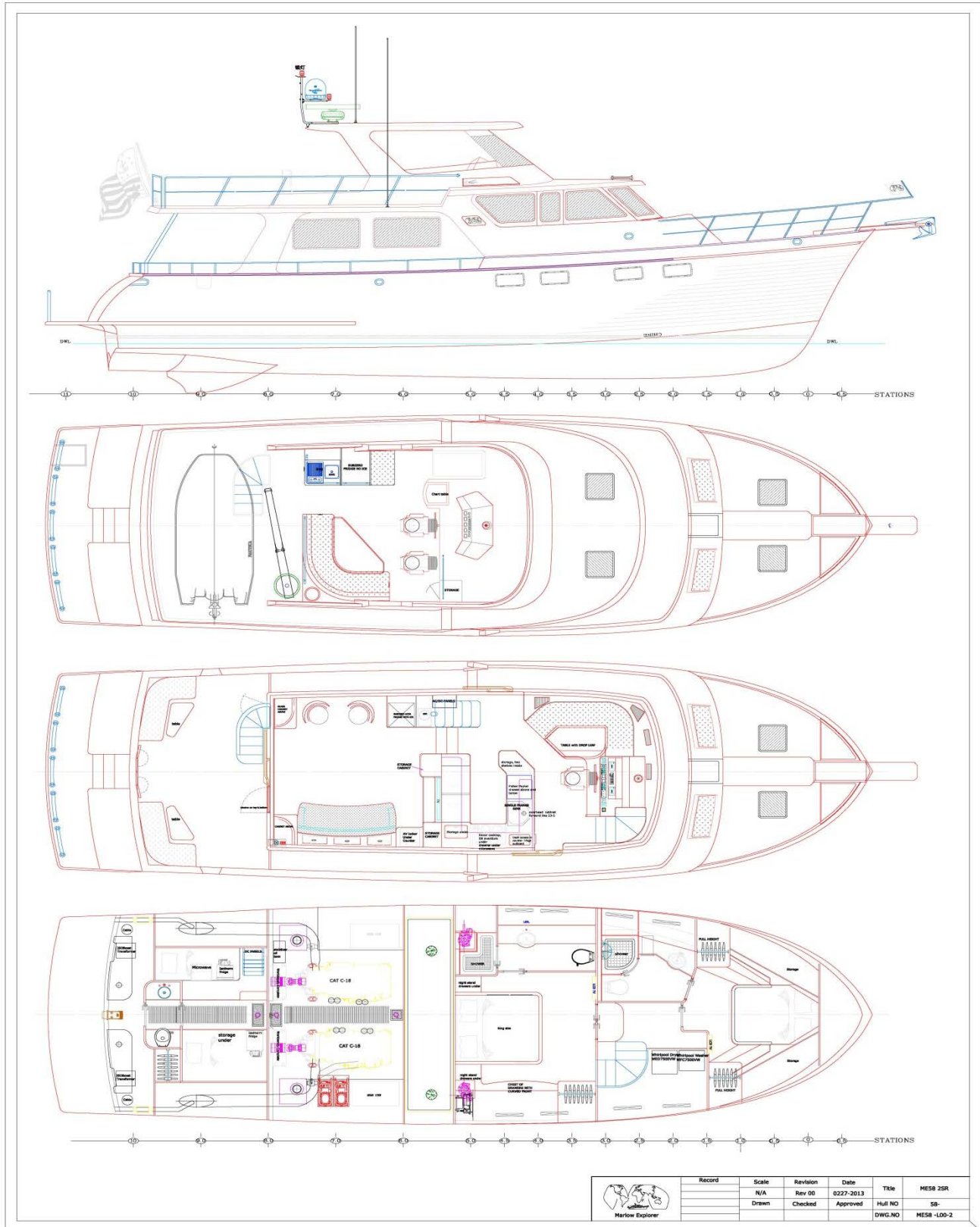


Standard Specifications **MARLOW EXPLORER 58 E**



CENTERLINE LENGTH (ft/m)	59'1" / 18.01
LENGTH OVERALL (LOA) (ft/m)	67'8" / 20.62
LENGTH WATERLINE (LWL) (ft/m)	54'4" / 16.56
BEAM (ft/m)	18'6" / 5.64
DRAFT (ft/m)	4'10" / 1.47
HEIGHT ABOVE WATER LINE TO RADAR ARCH TOP (ft/m)	18'2" / 5.54
DISPLACEMENT (APPROX.) (lb/kg)	69,000 / 31,298
FUEL CAPACITY* (gal/lt)	1500 / 5678
WATER CAPACITY* (gal/lt) - Drinking	300 / 1135
HOLDING TANK CAPACITY* (gal/lt) - Gray	100 / 378
HOLDING TANK CAPACITY* (gal/lt) - Black	125 / 473
STANDARD POWER	C9 CAT 575MHP(2)
STANDARD GENERATOR	Onan 17KW @ 60HZ

MARLOW EXPLORER 58 E



Record	Scale	Revision	Date	Title	MESB 2SR
	N/A	Rev 00	0227-2013		
	Drawn	Checked	Approved	Hull NO	58-
				DWG.NO	MESB-L00-2